



# LCD Video Walls

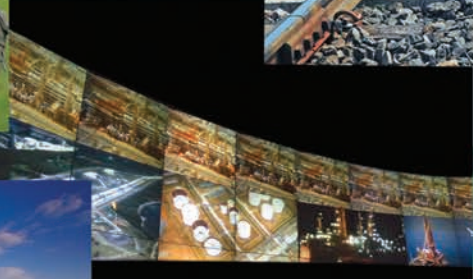
Xtra Narrow Bezel LCD Displays  
Sharp Images and Vibrant Colors  
Full HD 1080p Resolution  
LED Backlighting  
Industrial Design for 24/7 Operation

[www.deltadisplays.com](http://www.deltadisplays.com)



Smarter. Greener. Together.







# Limitless As Your Imagination...

Featuring exceptional color quality, high brightness and high contrast, Delta's LCD video wall displays are the ideal solution for many demanding space-constrained video wall applications. With a minimum 1.8mm (Typical) combined bezel width, multiple screens can be tiled together to achieve a near seamless image. Expand your vision with Delta's professional-grade Xtra narrow bezel LCD video walls!





# Expand

## Xtra / Ultra Narrow Bezel

Featuring an extremely narrow bezel width of 1.8mm / 3.5mm (Typical), Delta's LCD video wall displays provide a near seamless image for public venues and control rooms. Additionally, it supports up to a 20 x 15 display array for outstanding tiled visual performance.

## High Resolution

With full HD 1080p resolution, the LCD video walls are ideal for demanding control room environments where image quality and detail are of utmost importance.

## Wide Viewing Angle

Delta's LCD video walls provide a wide viewing angle of 178° to ensure all-round visibility with excellent image quality and uniform color in large spaces.



# Your Vision

## LED Light Source

All the LCD video walls feature direct LED backlights, which reduce burn-in and ensure long life, high uniformity and low power consumption for long-term and 24/7 usage.

## 24x7 Operation

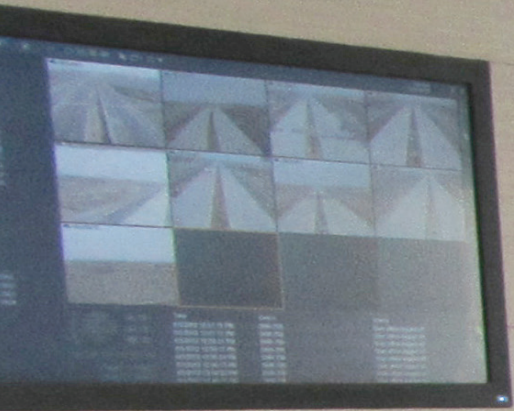
As a tiled LCD solution, the displays offer 24/7 industrial strength and minimal maintenance for a variety of applications such as retail stores, healthcare facilities, airports, broadcast, corporate lobbies, telecom and control rooms.

## Comprehensive Set of Inputs

Delta's LCD video walls come with a full array of connectivity and control options including DVI, HDMI and composite video (CBVS) without the need for additional processors.







Fostering Innovations In **LCD** Technology





---

### Unified Control Module\*

At the core of each LCD display architecture lies a unified control box design that integrates and encapsulates the entire processing equipment and power module in one unit. This helps to make your LCD display highly fault tolerant with low MTTR and high MTBF and enhance the display system's overall reliability and ease of operation and maintenance.

---

### Web-based Control\*

Delta's LCD video walls are accessible over an IP network through a browser/server architecture based software tool designed for monitoring, control and diagnostic purposes. This software application provides the operator with direct feedback on the status of the system with multiple levels of alarms.

---

### Scalability

Delta's scalable and expandable LCD panels are designed for a variety of applications such as control centers, network operations centers, airports, conference rooms and public signages and can be mounted vertically or horizontally to form one large display of any size.

\*Only for Ultra Narrow Bezel LCD video wall



# Display Management

## Icon Pro Series Controller

The Delta Icon Pro Series Controller is a multi-screen graphics controller running on the Windows® Platform. The Icon Pro Series controller drives multiple cubes to form one large logical screen called a video wall or a data wall. The video wall displays graphics information from the controller workstation as well as information from various sources connected to the controller.



## Key Features

- Raid 0,1, 5 and 10 support
- KVM over LAN, serial over LAN, LAN alert
- Redundant and hot swappable components
- Remote management for hardware functions
- Xeon Quad Core with multiple processor support
- Displays resolutions up to 1920 x 1200 per channel
- Switch fabric chassis for high demanding applications
- CPU, fan, temperature and chassis intrusion detection and alarm
- SNMP trap, event log, remote power control, command line interface
- Runs on all standard Windows® operating systems and with Linux® Emulation
- Input capability (SD video/ HD video / DVI / RGB / Component / 3G SDI / 4K / IP streams)
- Supports decoding of multiple camera types, multiple formats, custom formats and resolutions from QCIF, D1 to HD





# Control System You're In Control

## Distributive Vision Control System

Delta's Distributive Vision Control System (DVCS®) is one of the most advanced control systems in the world designed specifically for control room visual display systems. Combining the latest advances in Digital Signal Processing (DSP) technology and with recent improvements in video compression rates, the Delta DVCS® enables customers to capture, distribute, control and display high-resolution graphics / 4K / HD video / SD Video / 3G-SDI / DVI / RGB / Audio signals over an IP network-reliably and cost effectively.



### Key Features

- Hot-swappable
- Compact and silent
- Low power consumption
- Real-time monitoring of all windows
- Remote display wall control through network
- Integrated KVM for remote control of displays
- Supports Hi-Fi audio transmission over the network
- Supports up to 64 input signal sources in one display
- Supports 10 RGB/Video signal preview simultaneously
- Supports remote processor firmware upgrade over the network
- DVCS® server can communicate to more than 10000 processors
- Supports multiple operators controlling a large scale display wall simultaneously
- Supports multicasting. One input signal can be displayed on an unlimited number of displays





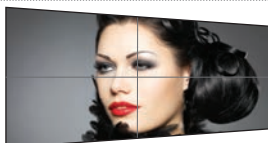
# Specifications: Xtra Narrow Bezel LCD Video wall

Specifications	LW-5581 MR Series
Resolution	1920 x 1080
Pixel Pitch	0.63 mm
Light Source	LED
Contrast Ratio	2000:1
Color Capability	1.07 Billion
Response Time	8 ms
Viewing Angle	H : 178°, V : 178°
Scan Rate	H: 30~91kHz, V: 50~85Hz
Video	NTSC, PAL, SECAM 480i, 480p, 720p, 1080i, 1080p,
Standard Inputs	1x Analog RGB (D-Sub); 1x Digital DVI-D; 2x HDMI; 1x USB; 3x BNC- Component (YPbPr); 1x BNC-Composite (shared with component); 1x DP; 1x OPS Slot; 1x Audio-In (RCA L/R); 1x Stereo mini jack
Standard Outputs	1x DVI / DP; 1x Audio-Out; 1x Speaker Out
Control	1x RS 232 In; 1x RS 232 Out; 1x RJ45
Input Voltage	AC 90~240V@50/60 Hz
Power Consumption	< 200W
Standby Mode	< 0.5W
Temperature	5°C - 40°C
Humidity	10% - 90%, non-condensing
Operating Life	> 50,000 hours
Combined Bezel (Typical)	1.8 mm
Video Wall Tiling	20 X 15

LW-5581 MR VA

LW-5581 MR VC

## LCD Video wall Model No.





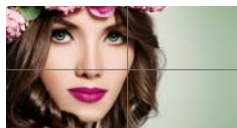


Panel Size	55" Xtra Narrow Bezel	55" Xtra Narrow Bezel
Brightness	700 nits	500 nits
Dimension (W x H x D)	1211.4 x 682.2 x 98.5mm @ Vesa mount/106.9mm@ handle	1211.4 x 682.2 x 98.5mm @ Vesa mount/106.9mm@ handle



# Specifications: Ultra Narrow Bezel LCD Video wall

Specifications	LW-5580 TR Series	LW-4680 TR Series	LW-5581 LR Series
Resolution	1920 x 1080	1920 x 1080	1920 x 1080
Pixel Pitch	0.63 mm	0.53 mm	0.63 mm
Light Source	LED	LED	LED
Contrast Ratio	4000:1	4000:1	2000:1
Color Capability	1.07 Billion	1.07 Billion	1.07 Billion
Response Time	8 ms	8 ms	8 ms
Viewing Angle	H : 178°, V : 178°	H : 178°, V : 178°	H : 178°, V : 178°
Scan Rate	H: 30~75kHz, V: 50~85Hz	H: 30~75kHz, V: 50~85Hz	H: 30~91kHz, V: 50~85Hz
Video	NTSC, PAL, SECAM 480i, 480p, 720p, 1080i, 1080p,	NTSC, PAL, SECAM 480i, 480p, 720p, 1080i, 1080p,	NTSC, PAL, SECAM 480i, 480p, 720p, 1080i, 1080p,
Standard Inputs	1x HDMI, 1x CVBS, 1x Digital DVI-I	1x HDMI, 1x CVBS, 1x Digital DVI-I	1x Analog RGB (D-Sub); 1x Digital DVI-D; 2x HDMI; 3x BNC- Component (YPbPr); 1x BNC-Composite (shared with component); 1x DP; 1x Audio-In (RCA L/R), 1x Stereo mini jack; 1x USB, 1x OPS slot
Standard Outputs	1x Digital DVI-D	1x Digital DVI-D	1x DVI-I; 1x DP; 1x Audio-Out; 1x Speaker Out
Control	RS-232/RS-422/IR/ IP ( Ethernet)	RS-232/RS-422/IR/ IP ( Ethernet)	1x RS 232 In; 1x RS 232 Out; 1x IR In , 1x IR Out; 1x RJ45
Input Voltage	AC 90~240V@50/60 Hz	AC 90~240V@50/60 Hz	AC 90~240V@50/60 Hz
Power Consumption	< 209W	< 116W	< 185W
Standby Mode	< 2W at 110V	< 2W at 110V	< 0.5W
Temperature	0°C - 35°C (32°F - 95°F)	0°C - 35°C (32°F - 95°F)	5°C - 40°C
Humidity	10% - 90%, non-condensing	10% - 90%, non-condensing	10% - 90%, non-condensing
Operating Life	> 50,000 hours	> 50,000 hours	> 50,000 hours
Combined Bezel (Typical)	3.5 mm	3.5 mm	3.5 mm
Video Wall Tiling	20 X 15	20 X 15	20 X 15

LCD Video wall Model No.	LW-5580 TR IA / CA / RD	LW-5580 TR IC / CC / RC	LW-4680 TR IA / CA / RA	LW-4680 TR IC / CC / RC	LW-5581 LR VC
					
Panel Size	55" Ultra Narrow Bezel	55" Ultra Narrow Bezel	46" Ultra Narrow Bezel	46" Ultra Narrow Bezel	55" Ultra Narrow Bezel
Brightness	700 nits	500 nits	700 nits	500 Nits	500 Nits
Dimension (W x H x D)	1213.6 x 684.4 x 127.3 mm	1213.6 x 684.4 x 127.3 mm	1022.0 x 576.4 x 129.2 mm	1022.0 x 576.4 x 129.2 mm	1213.4 x 684.2 x 95 mm



# GLOBAL OFFICES



Website [www.deltadisplays.com](http://www.deltadisplays.com)  
Contact Us [vw.sales@deltadisplays.com](mailto:vw.sales@deltadisplays.com)

## Europe

### NETHERLANDS

Delta Electronics (Netherlands) BV  
Zandsteen 15,2132 MZ  
Hoofddorp,  
The Netherlands



### SLOVAKIA

Delta Electronics (Slovakia) s.r.o.  
Priemyselna ulica 4600/1  
018 41 Dubnica nad Vahom  
Slovakia



### FRANCE

Delta Electronics (France) S.A.  
ZI du bois Chaland  
2 15 rue des Pyrenees,  
Lisses 91056 Evry Cedex



## Americas

### USA/FREMONT

Delta Products Corporation  
Fremont Office  
46101 Fremont Blvd,  
Fremont, CA 94538, U.S.A



### MEXICO

Delta Electronics International Mexico  
S.A de C.V  
Via Dr. Gustavo Baz No., 2160,  
Colonia La Loma,  
54060 Tlalnepantla Estado de Mexico



### BRAZIL

Delta Greentech (Brasil) S/A  
Rua Almirante Alexandrino,  
3100 - Afonso Pena  
83045-210 - São Jose dos  
Pinhais- PR - Brasil



## Asia

### TAIWAN

Delta Electronics, Inc.  
186 Ruey Kuang Road,  
Neihu, Taipei 11491, Taiwan



### THAILAND

Delta Electronics (Thailand) PCL  
909 Soi 9 Moo 4, E.P.Z.Bangpoo  
Industrial Estate, Tambon Prakasa,  
Amphur Muang Samutprakarn,  
Samutprakarn 10280, Thailand



### JAPAN

Delta Electronics (Japan) Inc  
2-1-14 Minato-ku  
Shibadaimon,  
Tokyo 105-0012, Japan



### INDIA

Delta Electronics India Pvt. Ltd  
Plot No 43 Sector 35, HSIIDC  
Gurgaon 122001, Haryana, India



### SINGAPORE

Delta Electronics Int'l (S) Pte. Ltd.  
4 Kaki Bukit Ave 1, #05-05  
Singapore 417939



### CHINA

Delta Electronics (Shanghai) Co., Ltd.  
No.182 Minyu Road,  
Pudong Shanghai, P.R.C.  
Post Code: 201209



QR Code



The Delta logo is a trademark of Delta Group. All trademarks used in the brochures are the property of their respective trademark owners. Specifications are subject to change without prior notice. Projection images are simulated. Copyright ©2009 Delta Electronics Inc. All rights reserved. This document may not be copied in any form without written permission from Delta.